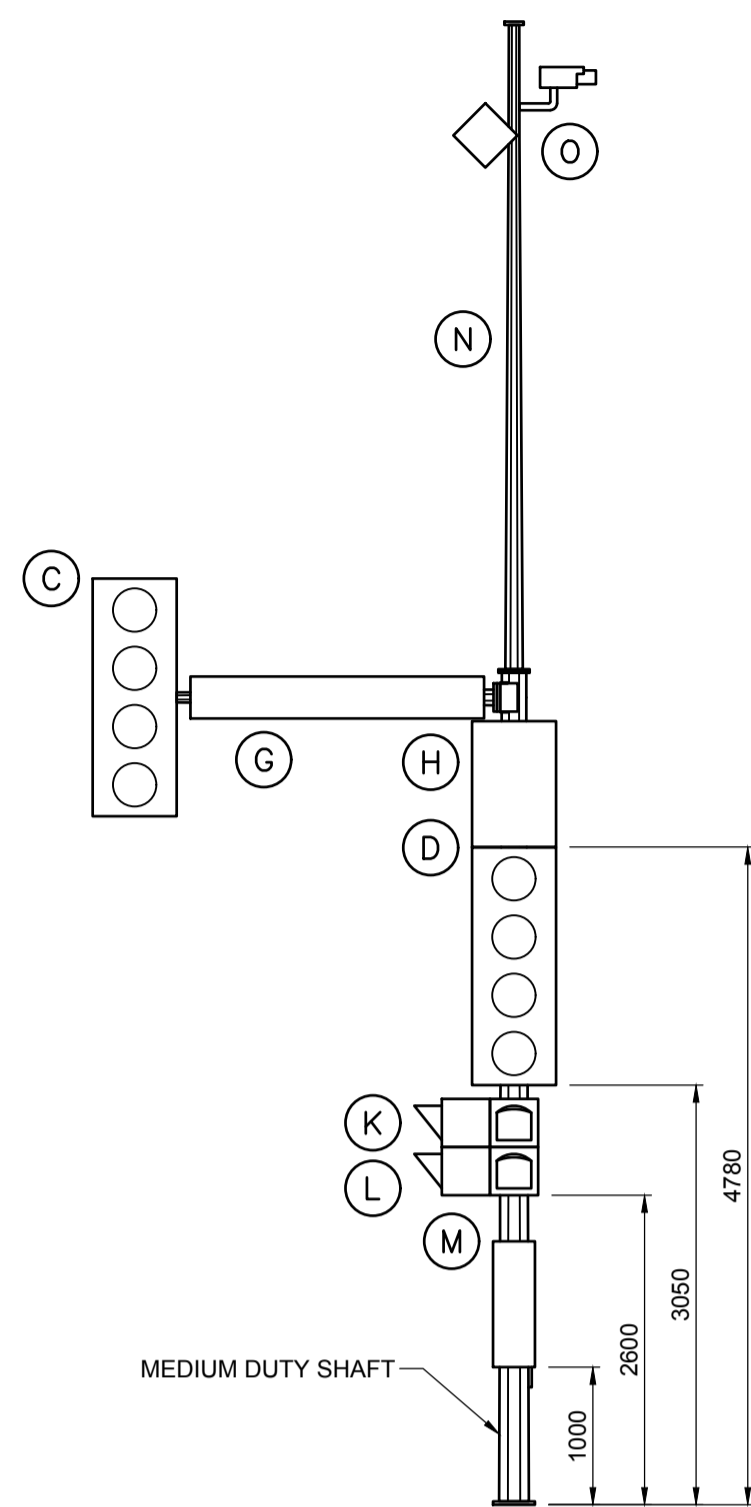
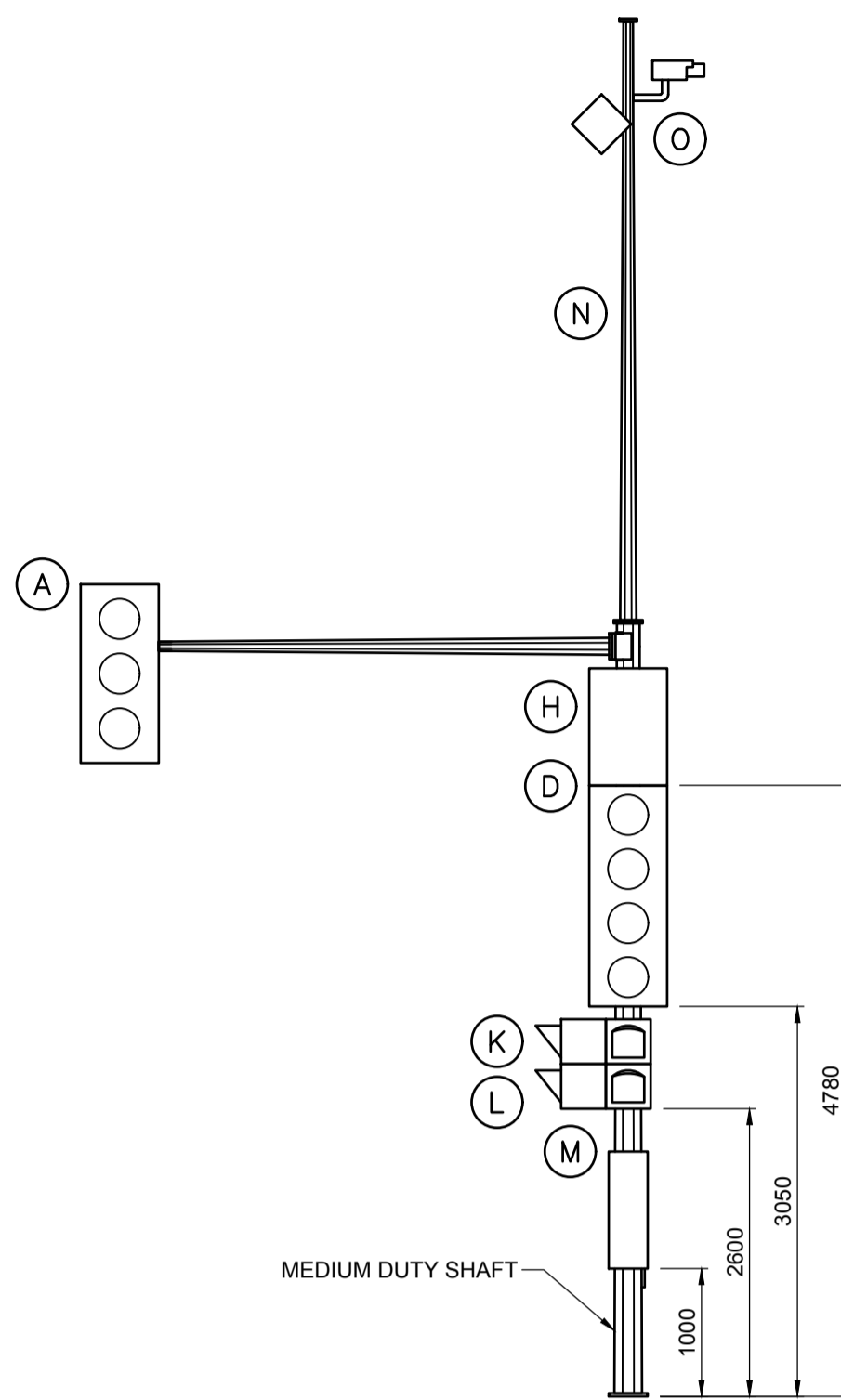


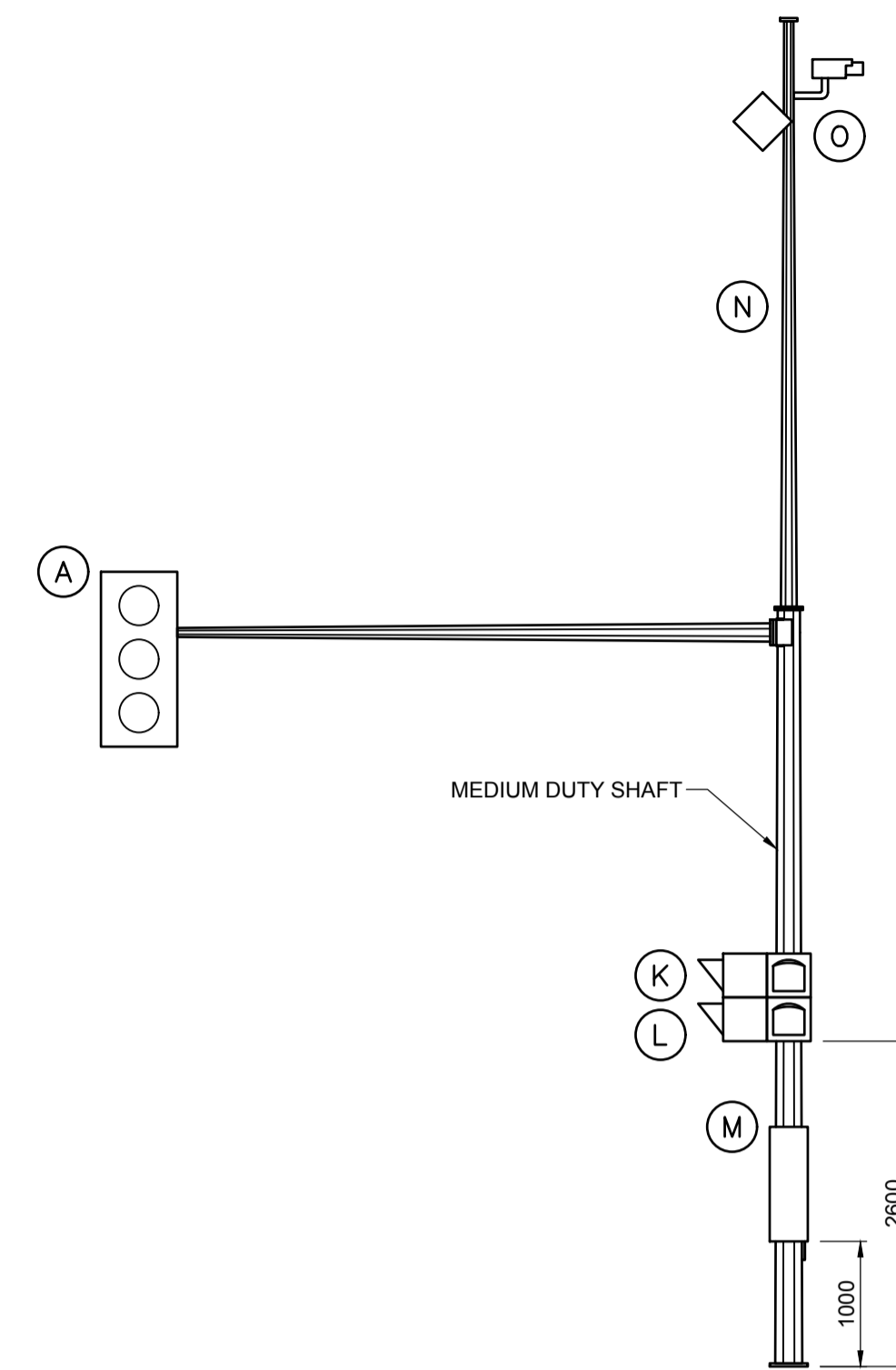
V:\Traffic_Signals\7_Planets\7_Coordination\Products_Specification\Drawings\New_folders\S-SD-06_Medium_Duty_Structures_8', 12', & 16' Arms_With_Extensions.dwg



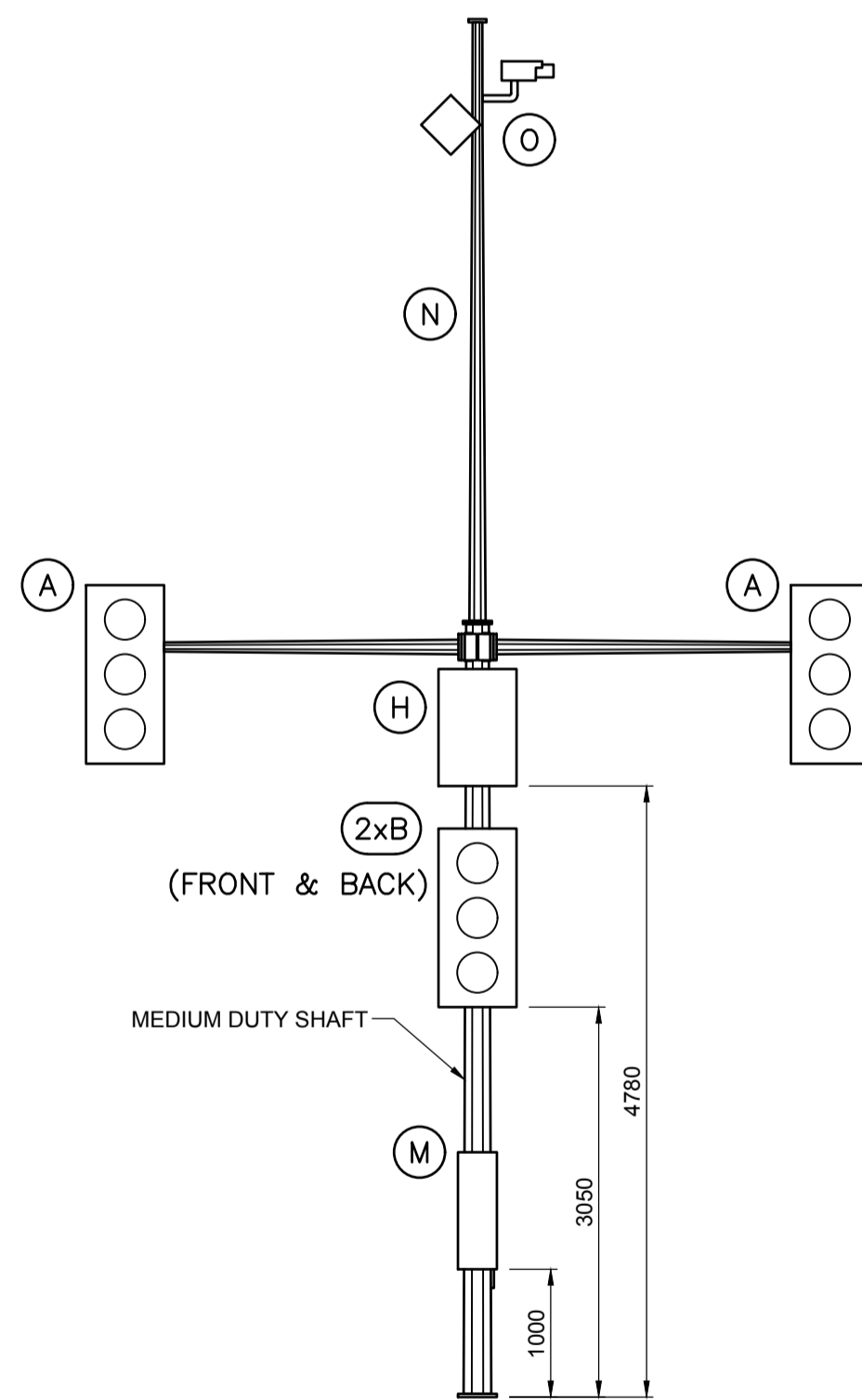
M8-Ga-E



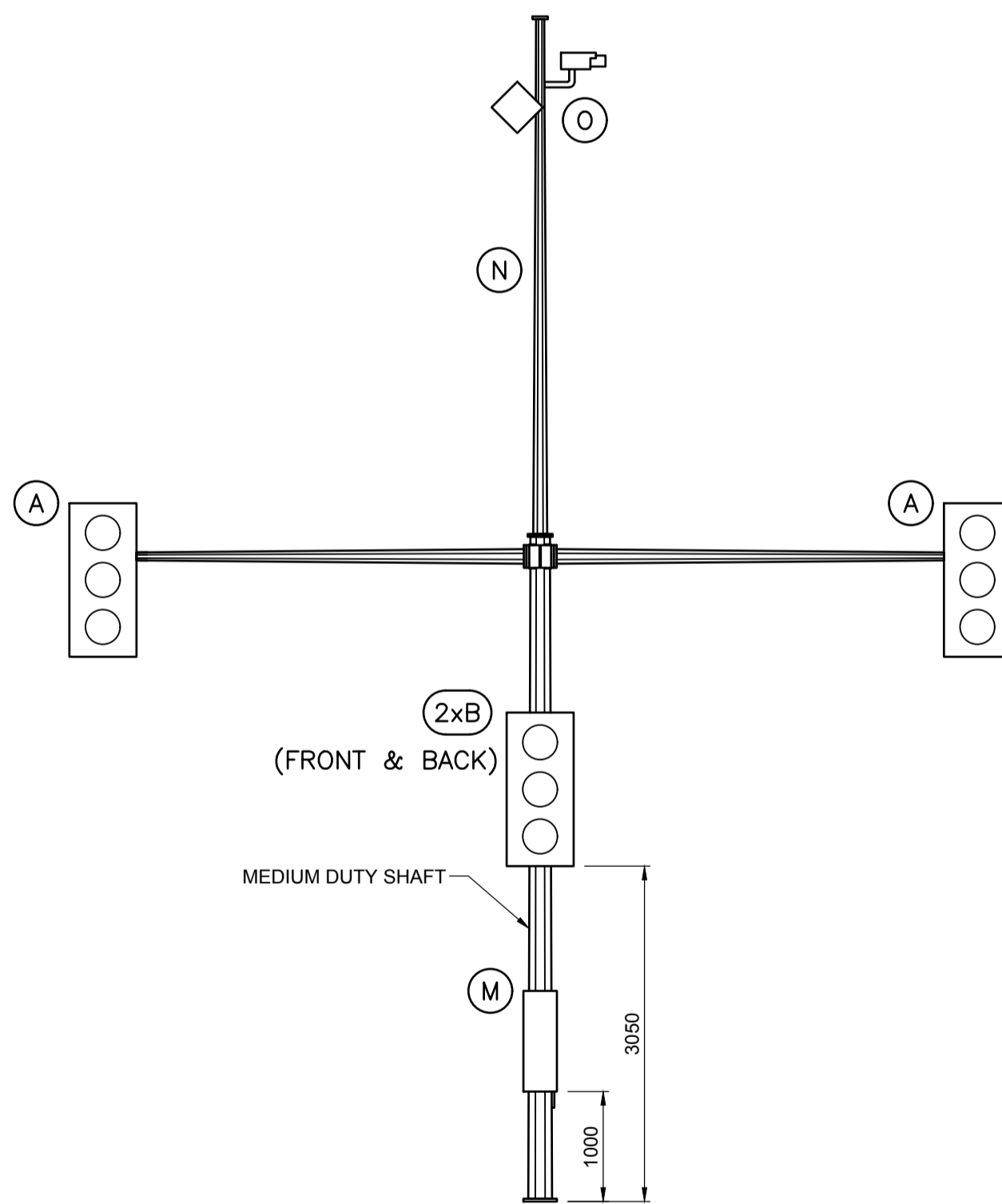
M12-Ga-E



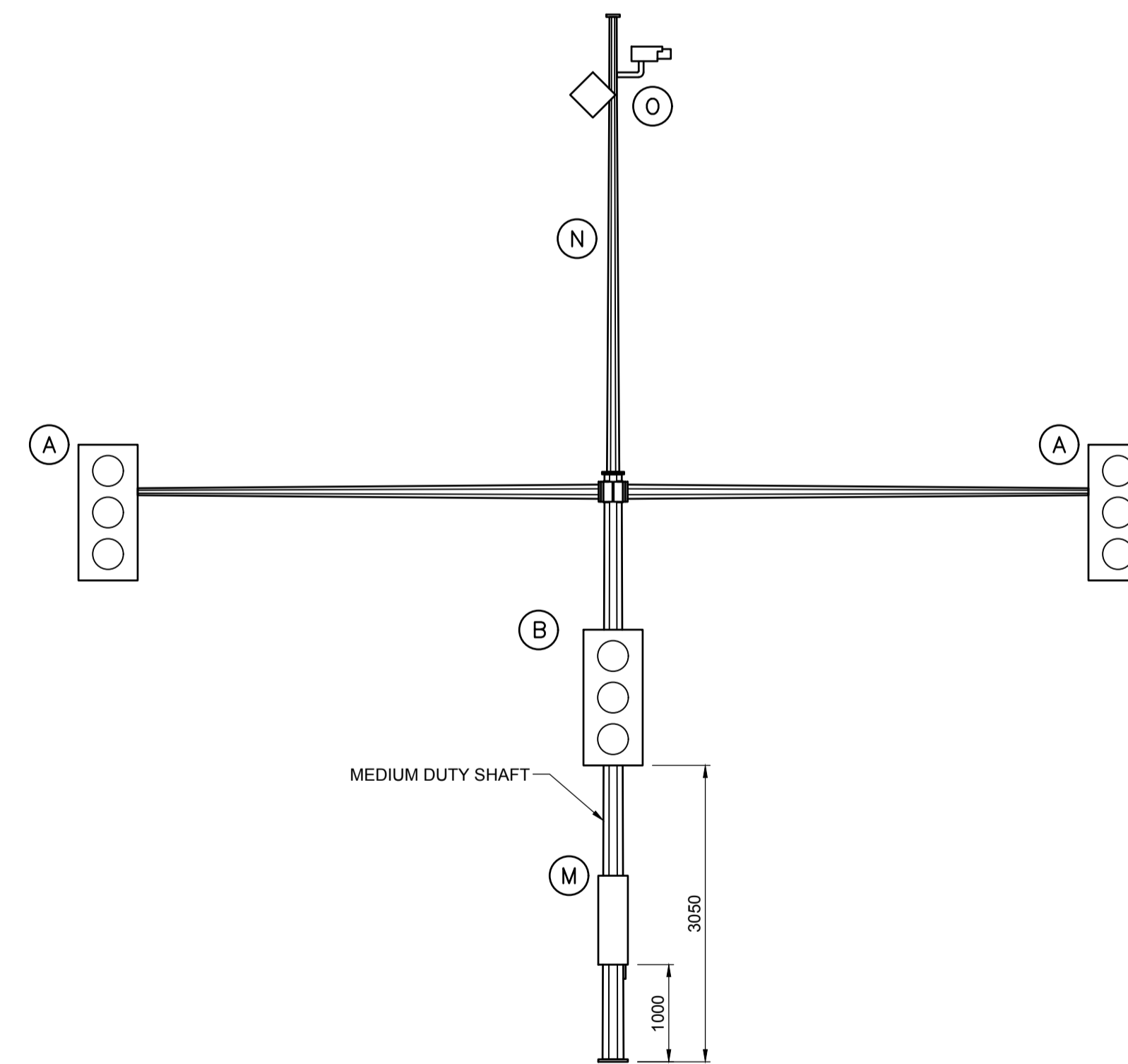
M16-Ga-E



M8/8-Gb-E



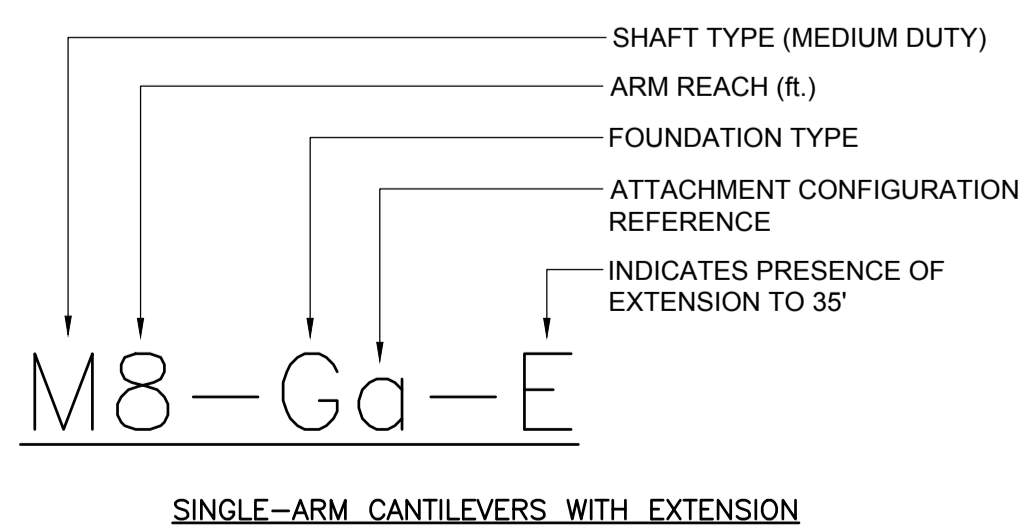
M12/12-Gb-E
M12/8-Gb-E



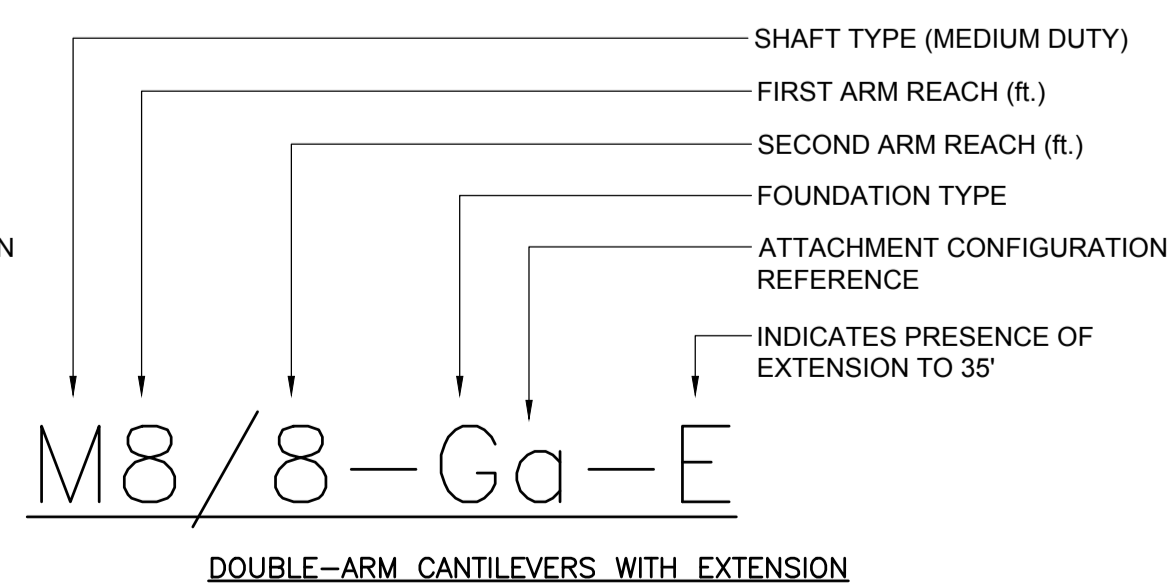
M16/16-Gb-E
M16/12-Gb-E
M16/8-Gb-E

NOTE:

1. ALL CONFIGURATIONS TO BE INSTALLED ON TYPE G-T BREAKAWAY BASE.
2. REFER TO SHEET 2 FOR ATTACHMENT DATA.
3. LOAD CONFIGURATIONS SHOWING SINGLE-ARM CANTILEVER ARM REACH TO THE LEFT, REACH TO THE RIGHT ALSO PERMITTED.



SINGLE-ARM CANTILEVERS WITH EXTENSION



DOUBLE-ARM CANTILEVERS WITH EXTENSION

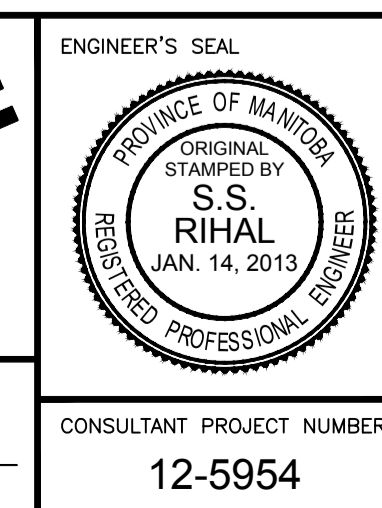
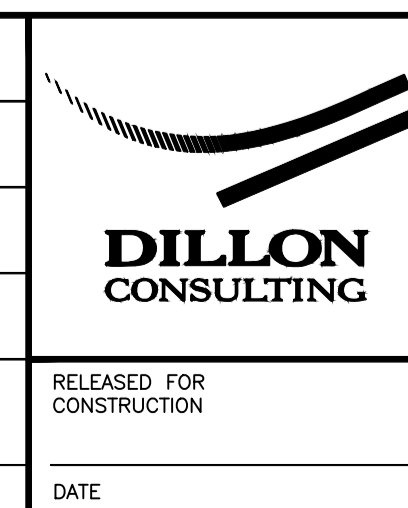
NAMING CONVENTION



REDUCED DRAWING
N.T.S.

B.M. ELEV.	DESIGNED BY	CDW	DRAWN BY	JGW	CHECKED BY	SSR	APPROVED BY	-
2	REVISED BY DILLON CONSULTING	1/10/14	CDW					
1	ISSUED BY DILLON CONSULTING	1/14/13	CDW					
NO.	REVISIONS	DATE	BY	DATE				

HOR. SCALE	NTS
VERTICAL	NTS



THE CITY OF WINNIPEG
PUBLIC WORKS DEPARTMENT

ATTACHMENT CONFIGURATIONS FOR MEDIUM DUTY STRUCTURES - 8', 12' & 16' ARMS WITH EXTENSION

CITY DRAWING NUMBER: S-SD-06
SHEET 6 OF 17
CONSULTANT DRAWING NUMBER: N/A

CONSULTANT PROJECT NUMBER: 12-5954